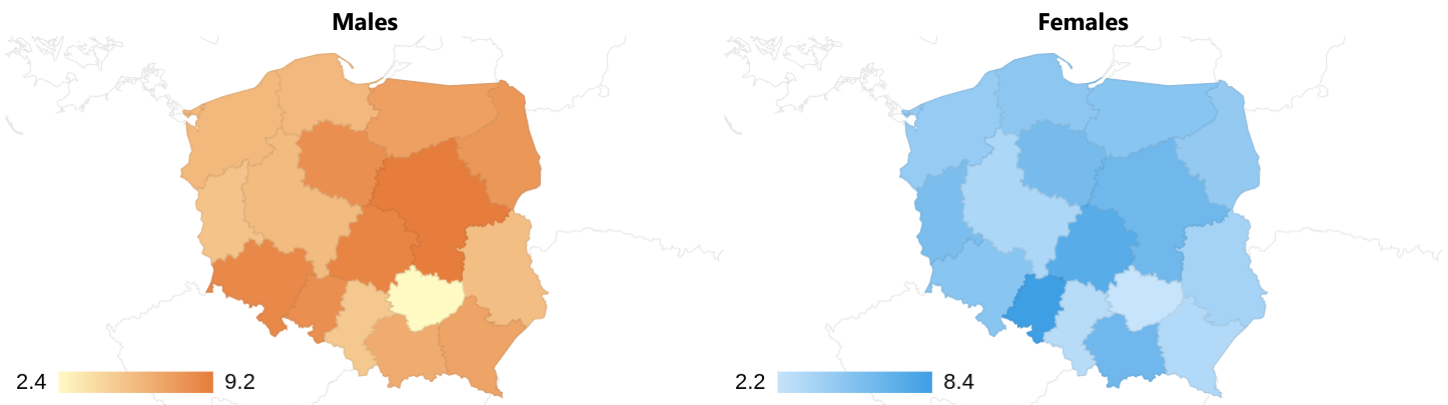


## Multiple myeloma (C90) in Poland in 2023

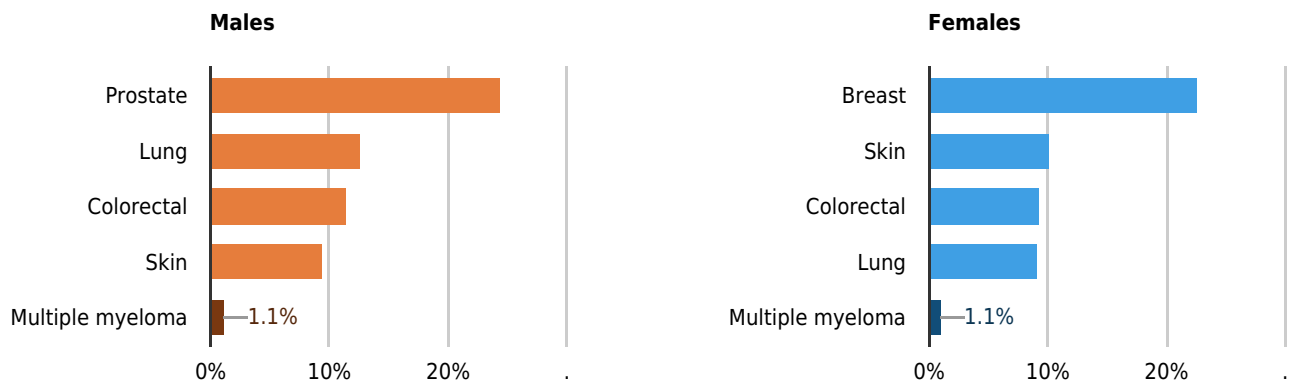
	Incidence			Mortality		
	Males	Females	Both sexes	Males	Females	Both sexes
Number of cases	1,084	1,035	2,119	615	691	1,306
Crude rate	6.0	5.3	5.6	3.4	3.5	3.5
ESP2013	6.9	4.9	5.7	4.4	3.2	3.6
ASW	3.0	2.2	2.6	1.5	1.1	1.3
Cumulative risk (to age 79)	0.5%	0.4%	0.4%	0.3%	0.2%	0.3%

### Incidence

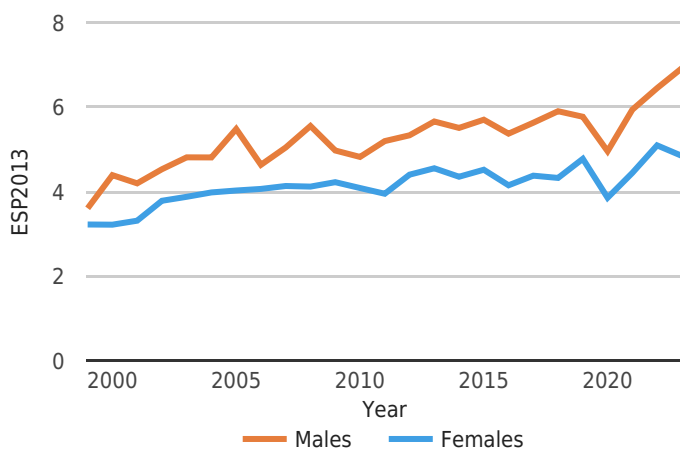
#### Geographical diversity by voivodeship (ESP2013)



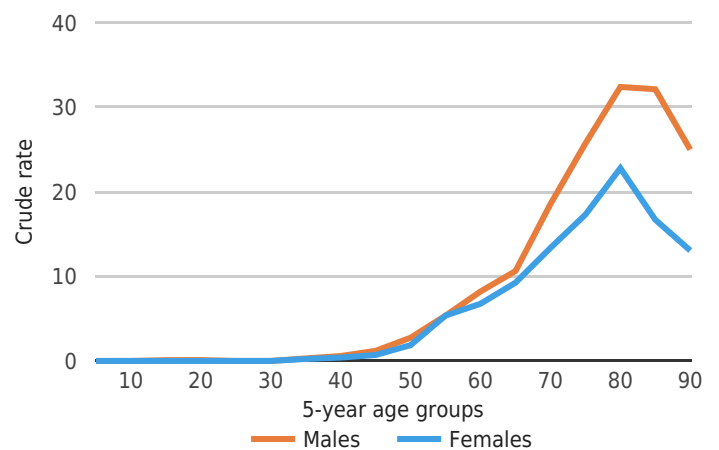
#### Percentage of all cancers



#### Time trends in the years 1999-2023

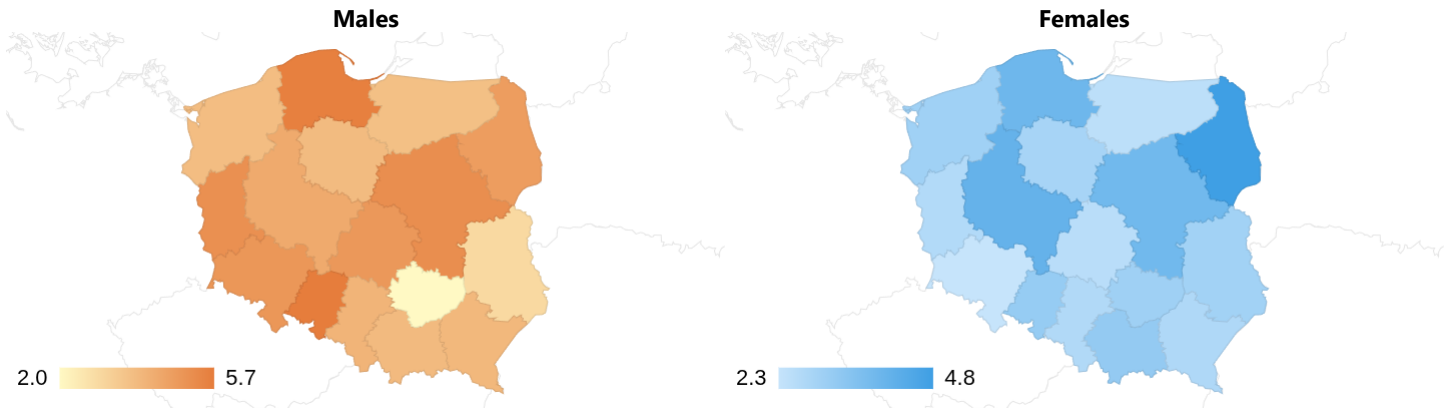


#### Incidence by age group

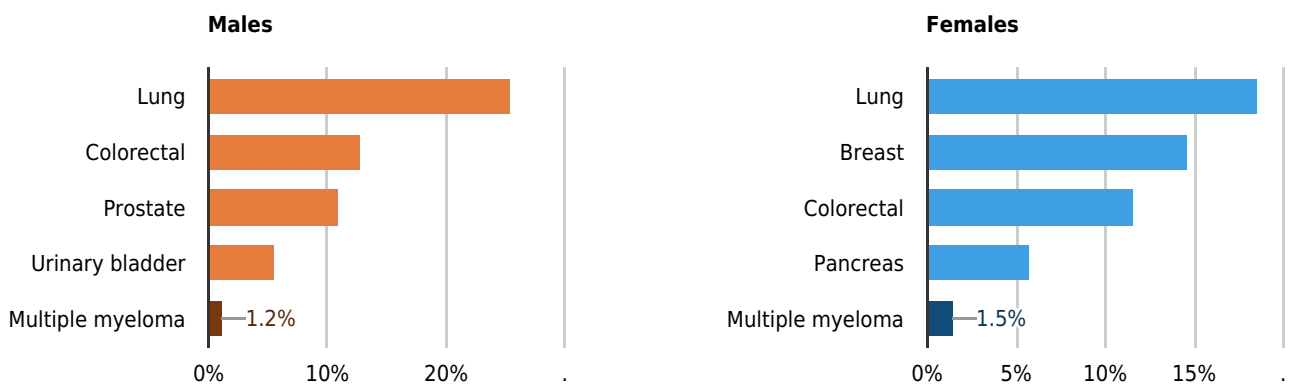


# Mortality

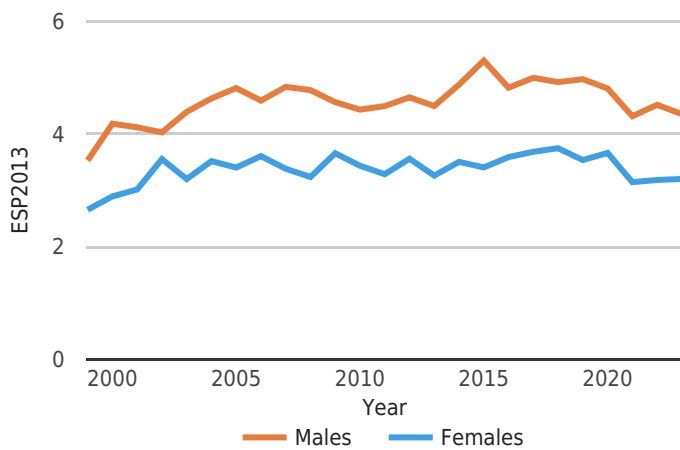
## Geographical diversity by voivodeship (ESP2013)



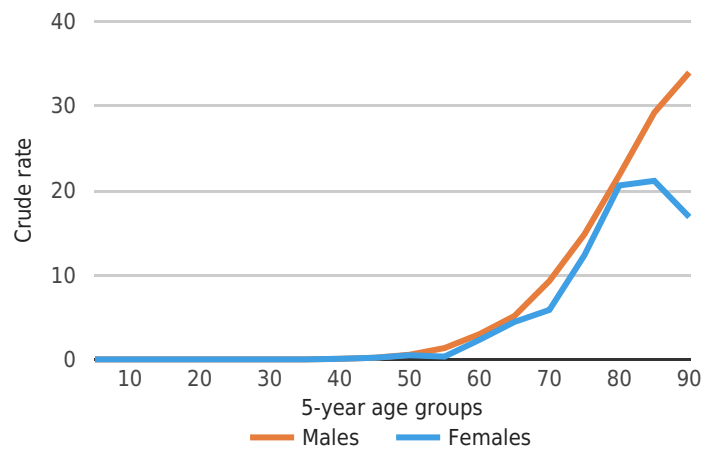
## Percentage of all cancers



## Time trends in the years 1999-2023



## Mortality by age group



**email:**  
[KRN.institut@nio.gov.pl](mailto:KRN.institut@nio.gov.pl)  
**website:**  
<https://onkologia.org.pl/en>