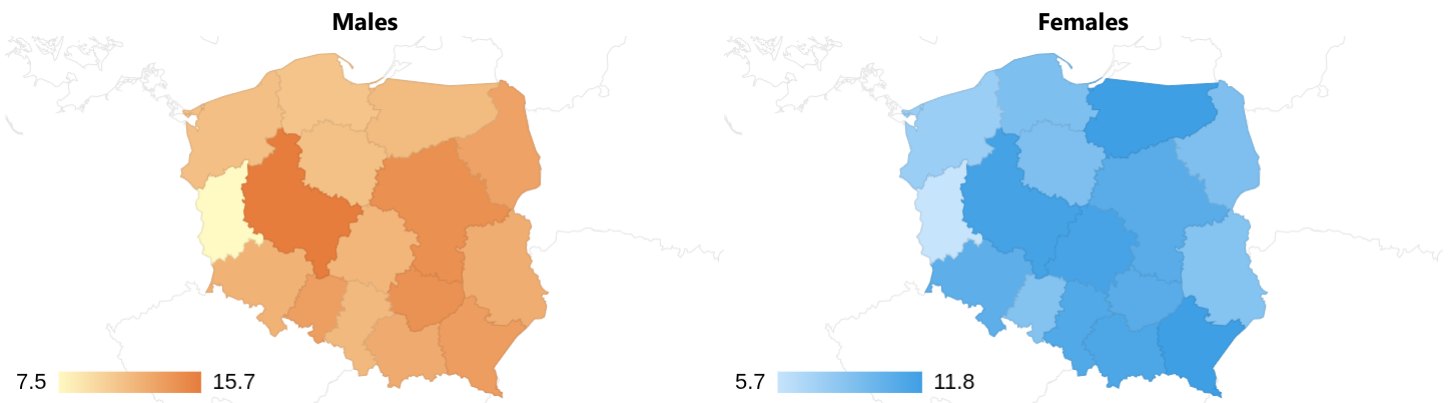


## Pancreatic cancer (C25) in Poland in 2023

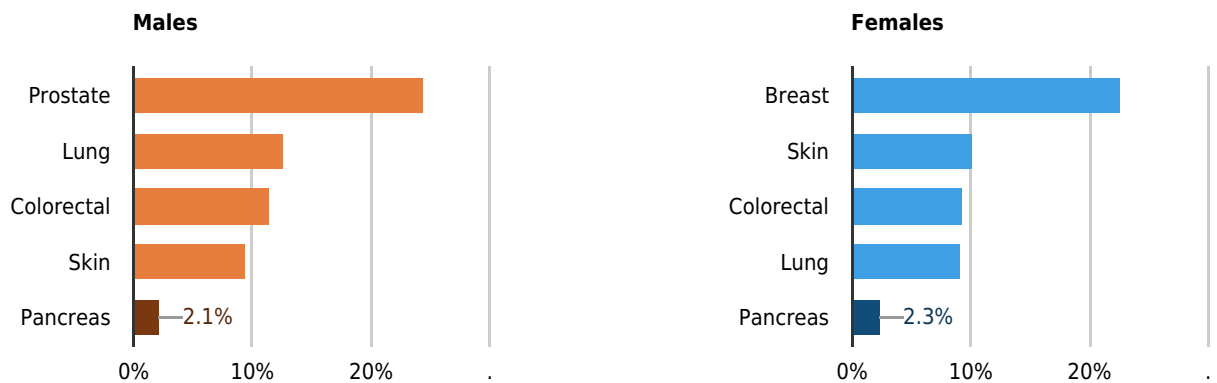
	Incidence			Mortality		
	Males	Females	Both sexes	Males	Females	Both sexes
Number of cases	2,067	2,213	4,280	2,455	2,631	5,086
Crude rate	11.3	11.4	11.4	13.5	13.5	13.5
ESP2013	12.7	10.3	11.4	15.7	12.1	13.7
ASW	6.0	4.8	5.3	6.7	4.8	5.7
Cumulative risk (to age 79)	1.0%	0.8%	0.9%	1.2%	0.9%	1.0%

### Incidence

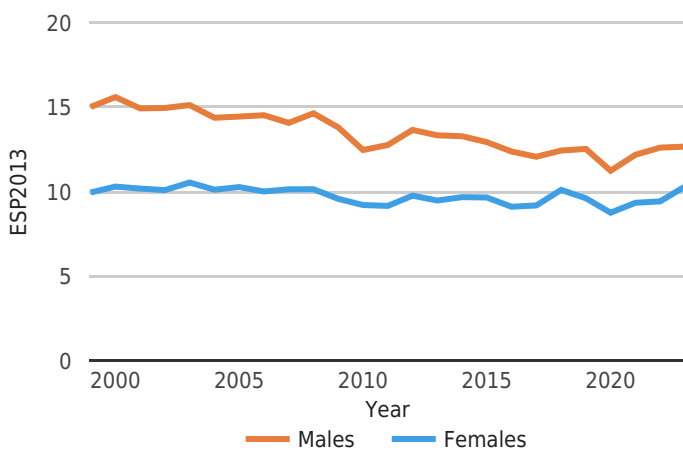
#### Geographical diversity by voivodeship (ESP2013)



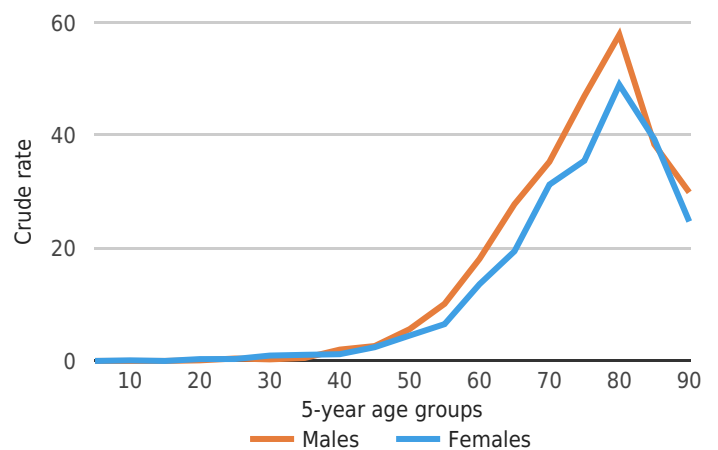
#### Percentage of all cancers



#### Time trends in the years 1999-2023

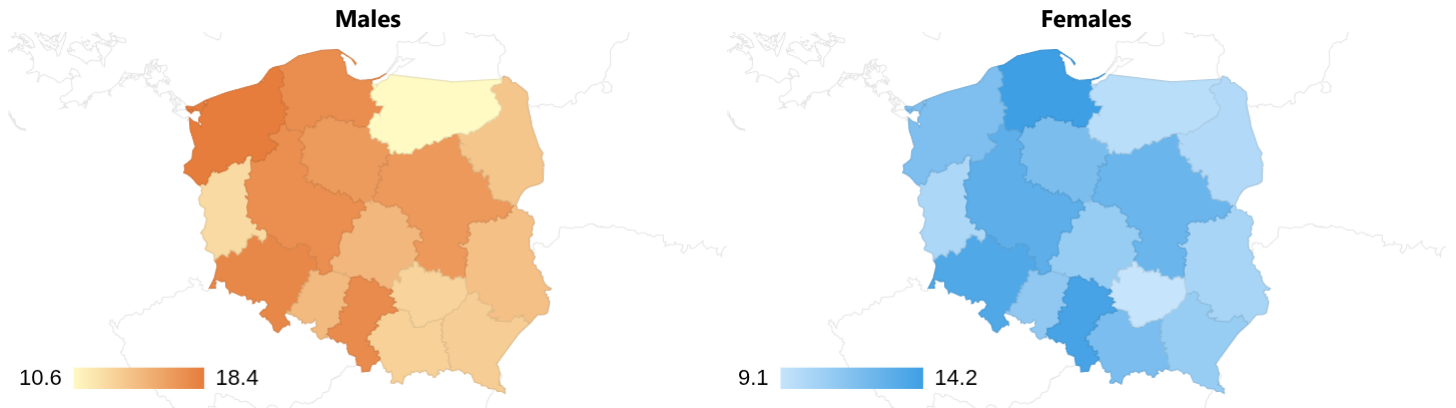


#### Incidence by age group

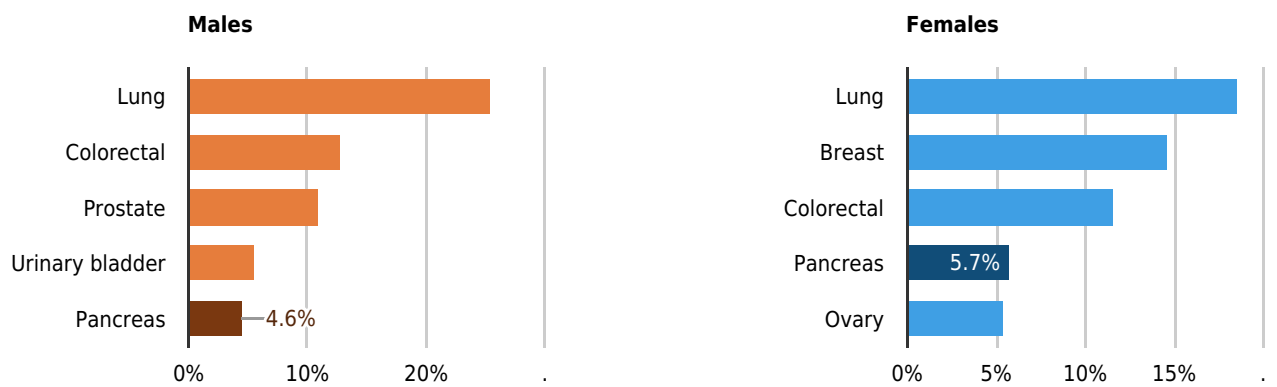


# Mortality

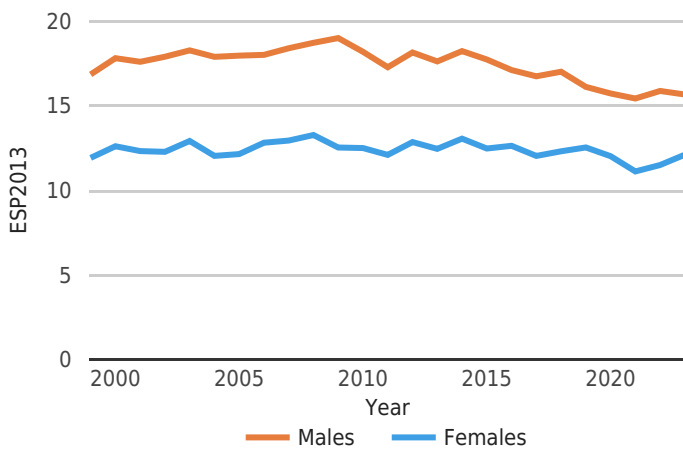
## Geographical diversity by voivodeship (ESP2013)



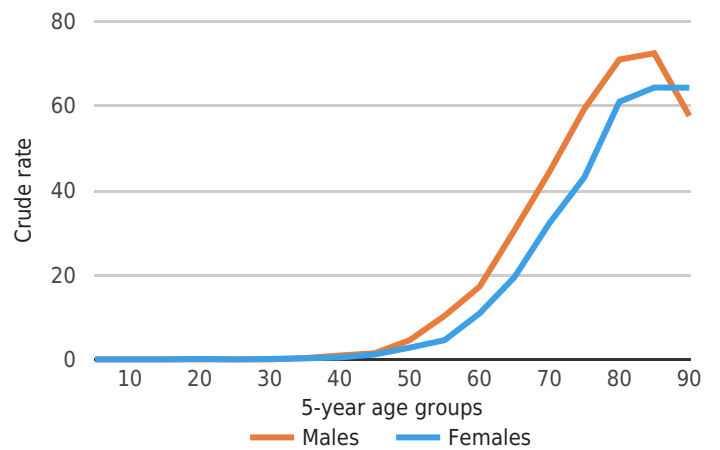
## Percentage of all cancers



## Time trends in the years 1999-2023



## Mortality by age group



**email:**  
[KRN.institut@nio.gov.pl](mailto:KRN.institut@nio.gov.pl)  
**website:**  
<https://onkologia.org.pl/en>